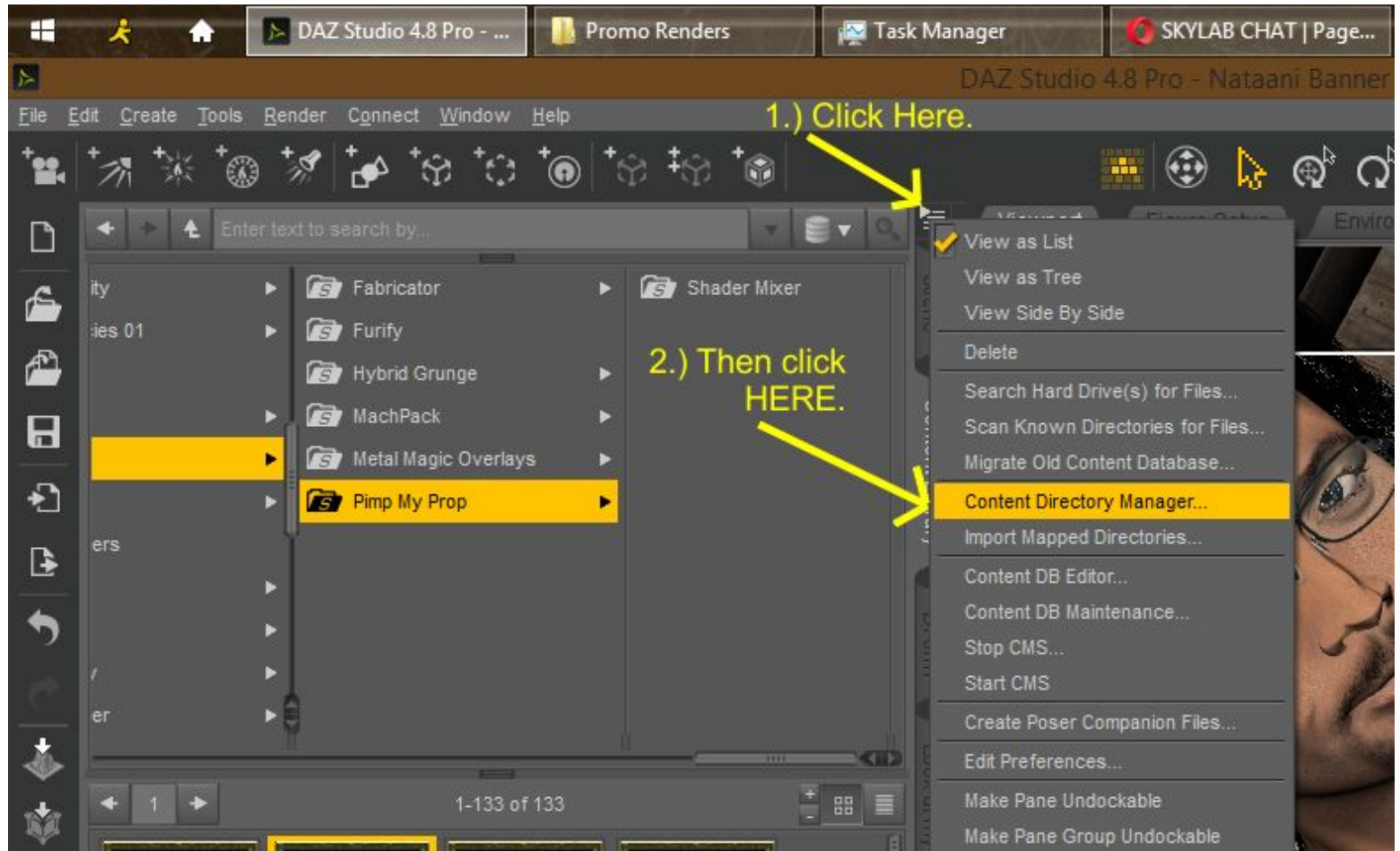
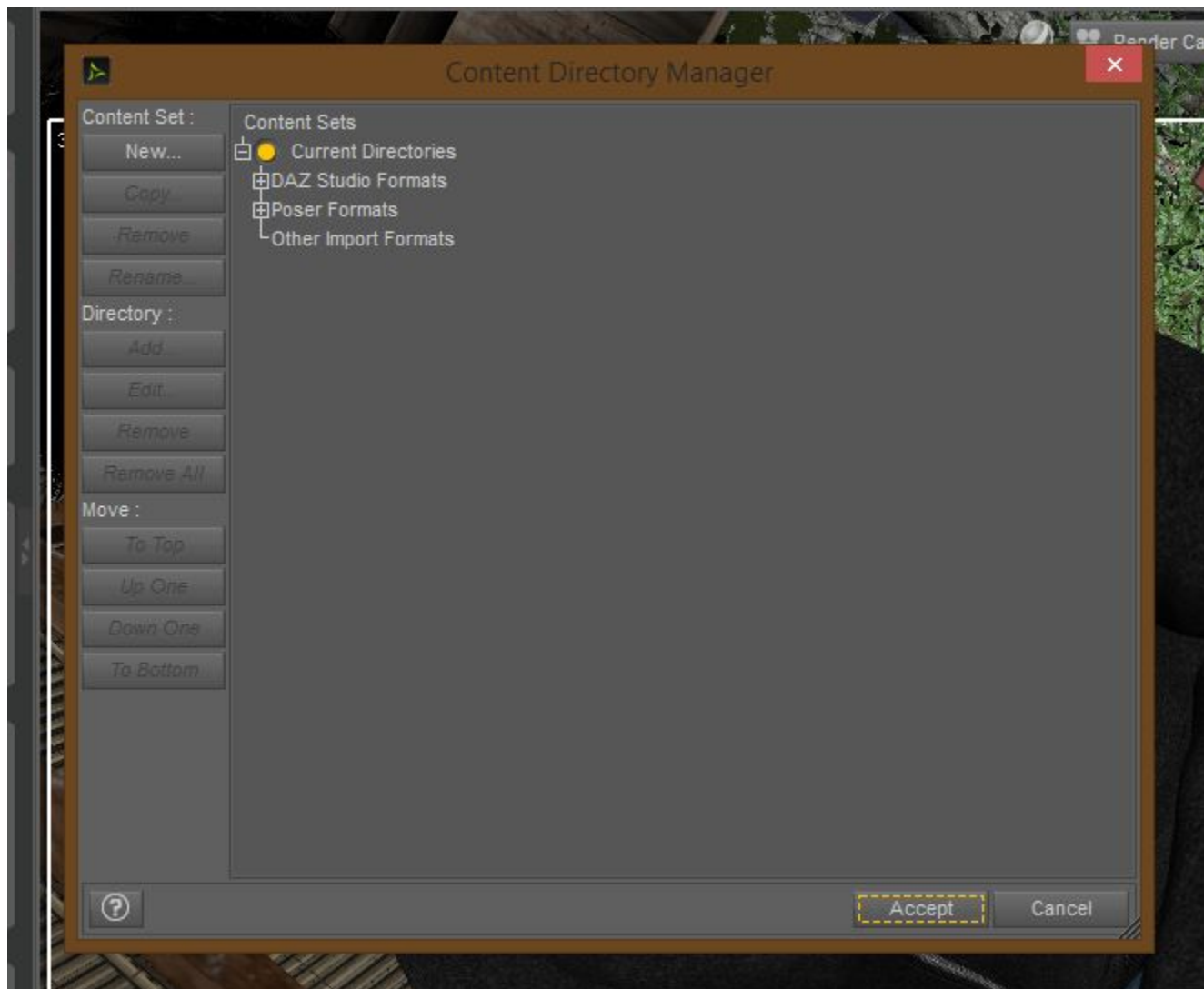


DS4 - CONTENT DIRECTORIES

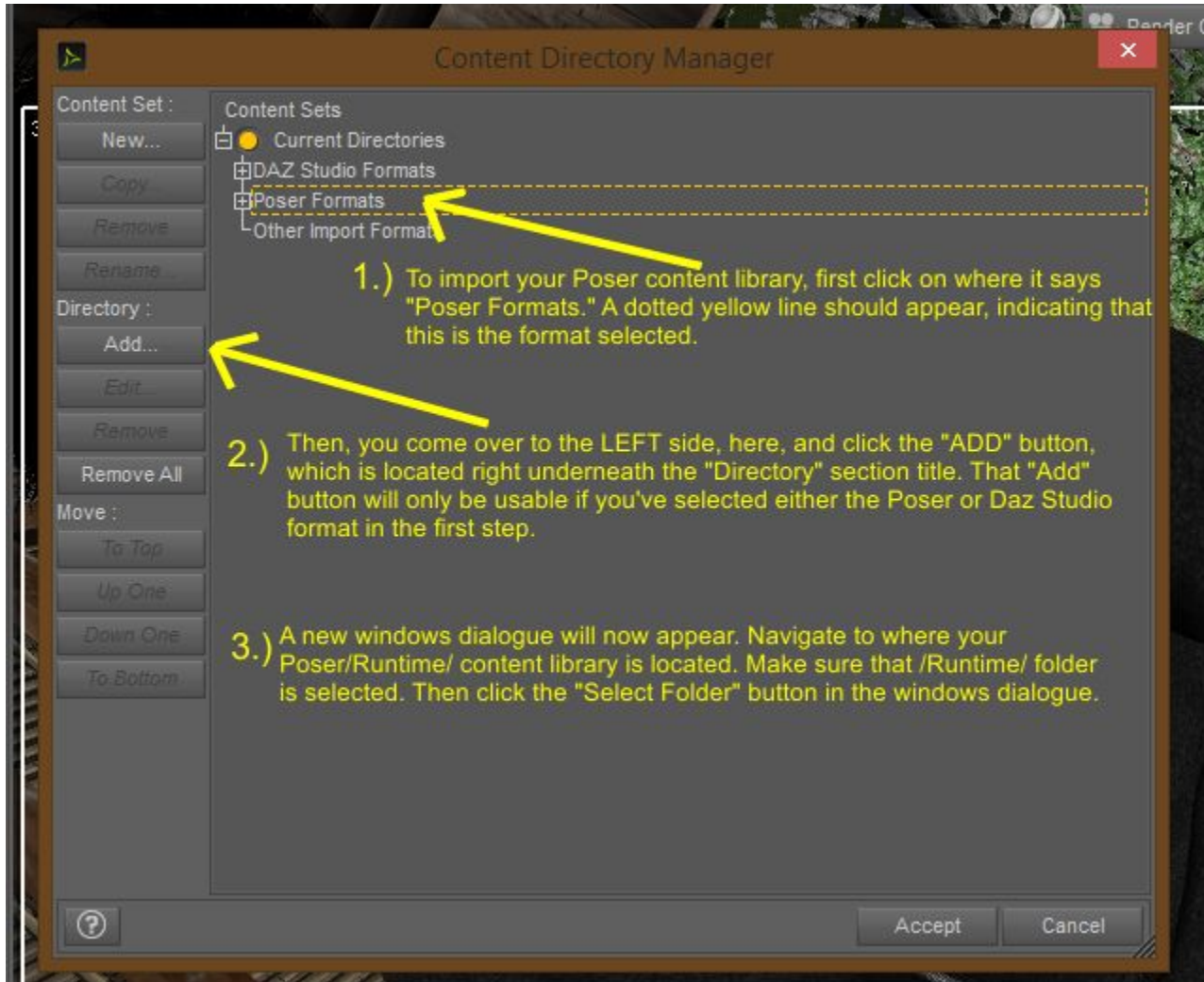
Okay... you will need to at least point DS to where your content libraries are. The first thing is to click on that little icon that looks like a notepad paper with a white triangle (*it's hiding just slightly behind the popup menu on this screenshot*).



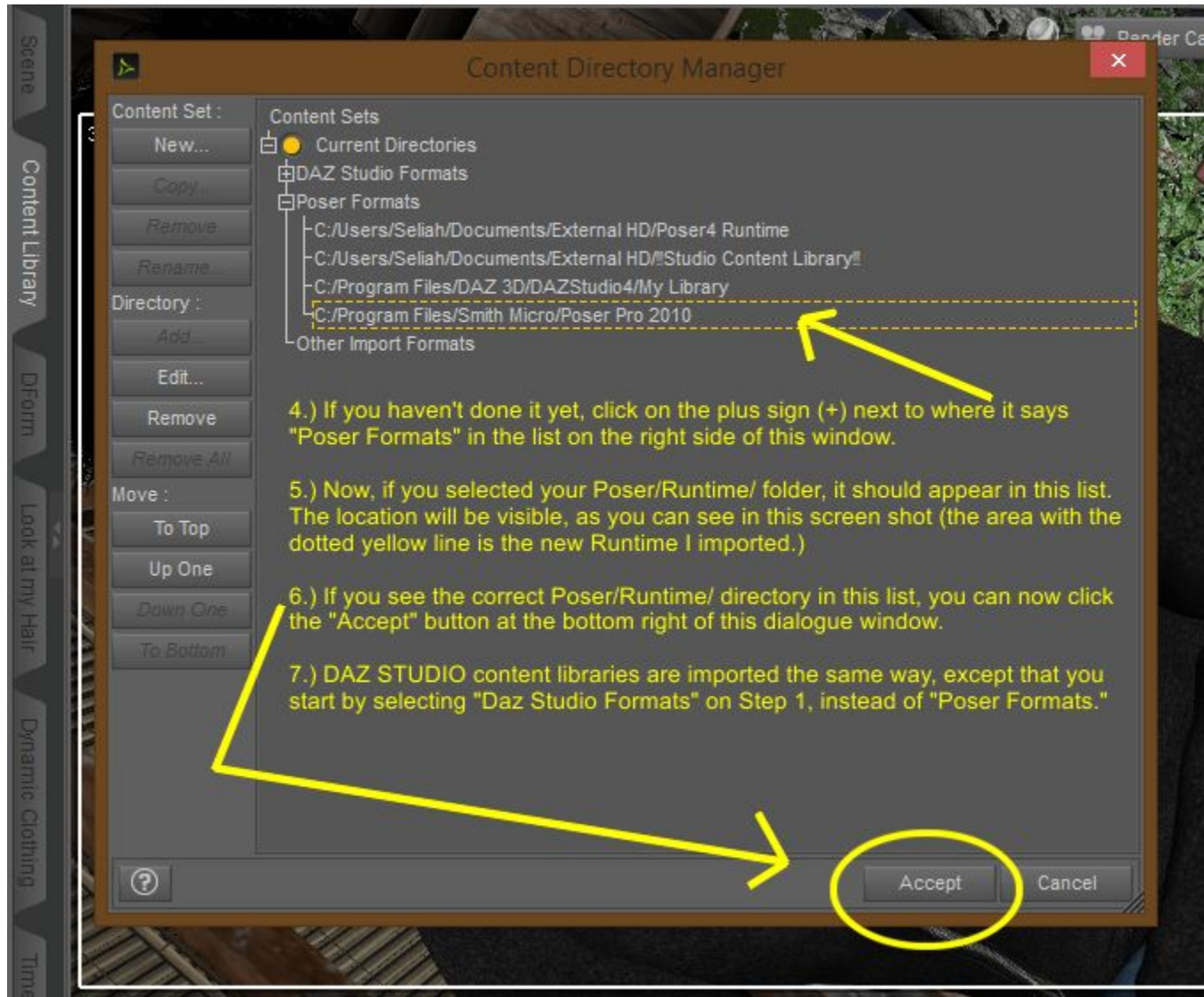
This is the window that will appear when you click on "Content Directory Manager" :

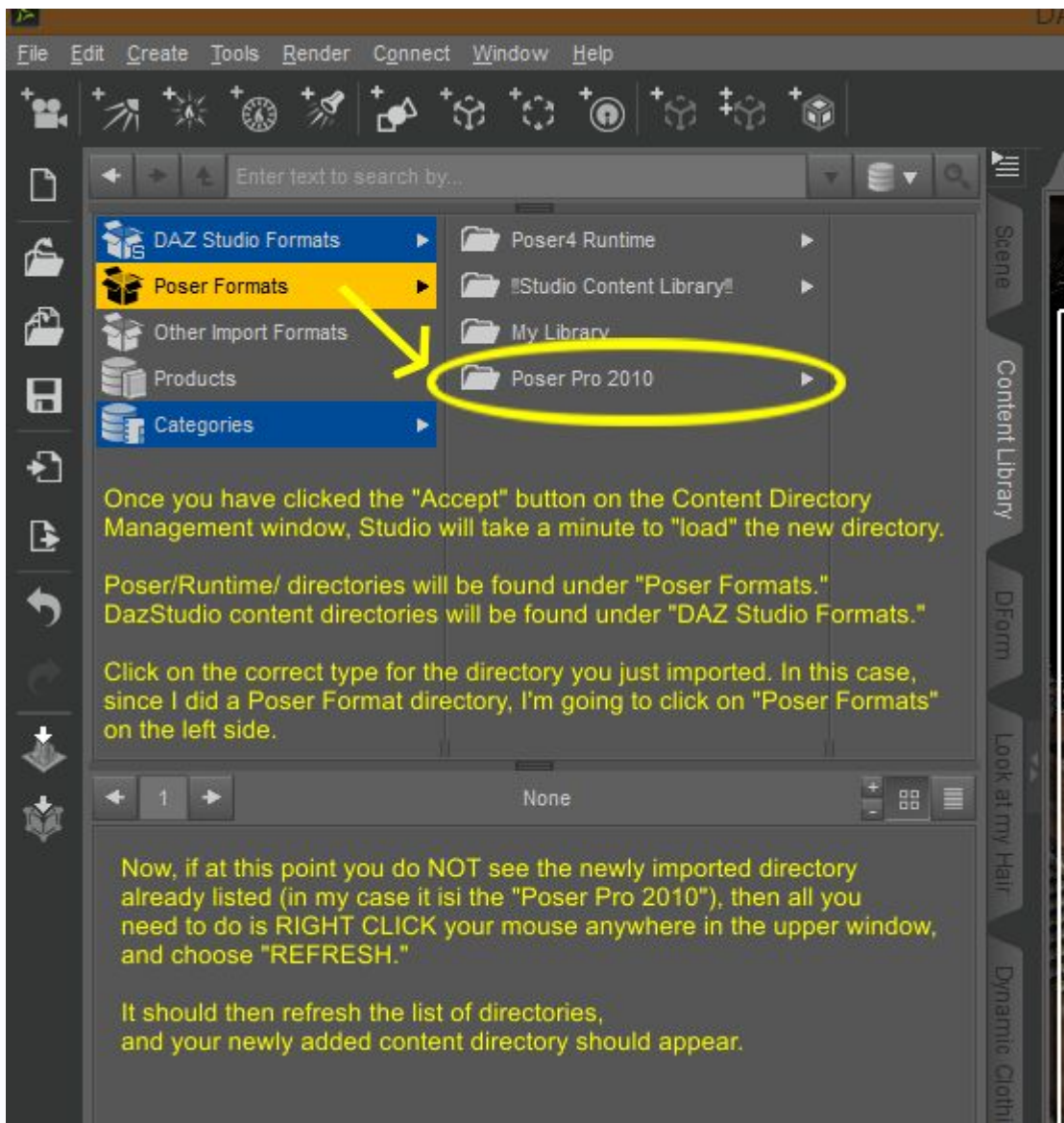


Moving on to the next step.....



And then the next steps.....





This is how I do it, whenever I need to add a directory. You will have to do this on both computers that you use. Once this is done, you just make sure you're looking under the right format (*Daz Studio Formats* for DS content, *Poser Formats* for *Poser/Runtime/* content!) for the type of content you want to use.

So any Daz Studio native file would be located under Daz Studio Formats, and any Poser native file would be under Poser Formats. In this way, you can literally switch back and forth between your DS content library, and your Poser content library without ever having to actually move your Poser directory at all. It can continue to live where it's always lived.

Hope this helps.